

Presentatie APB

17 april 2023

Gemeente Het Hogeland

Roemte voor Het Hogeland

'de basis voor onze keuzes'

Omgevingsvisie
Het Hogeland







Wonen



1

Werken



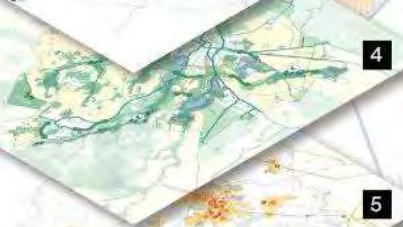
2

Mobiliteit



3

Klimaat

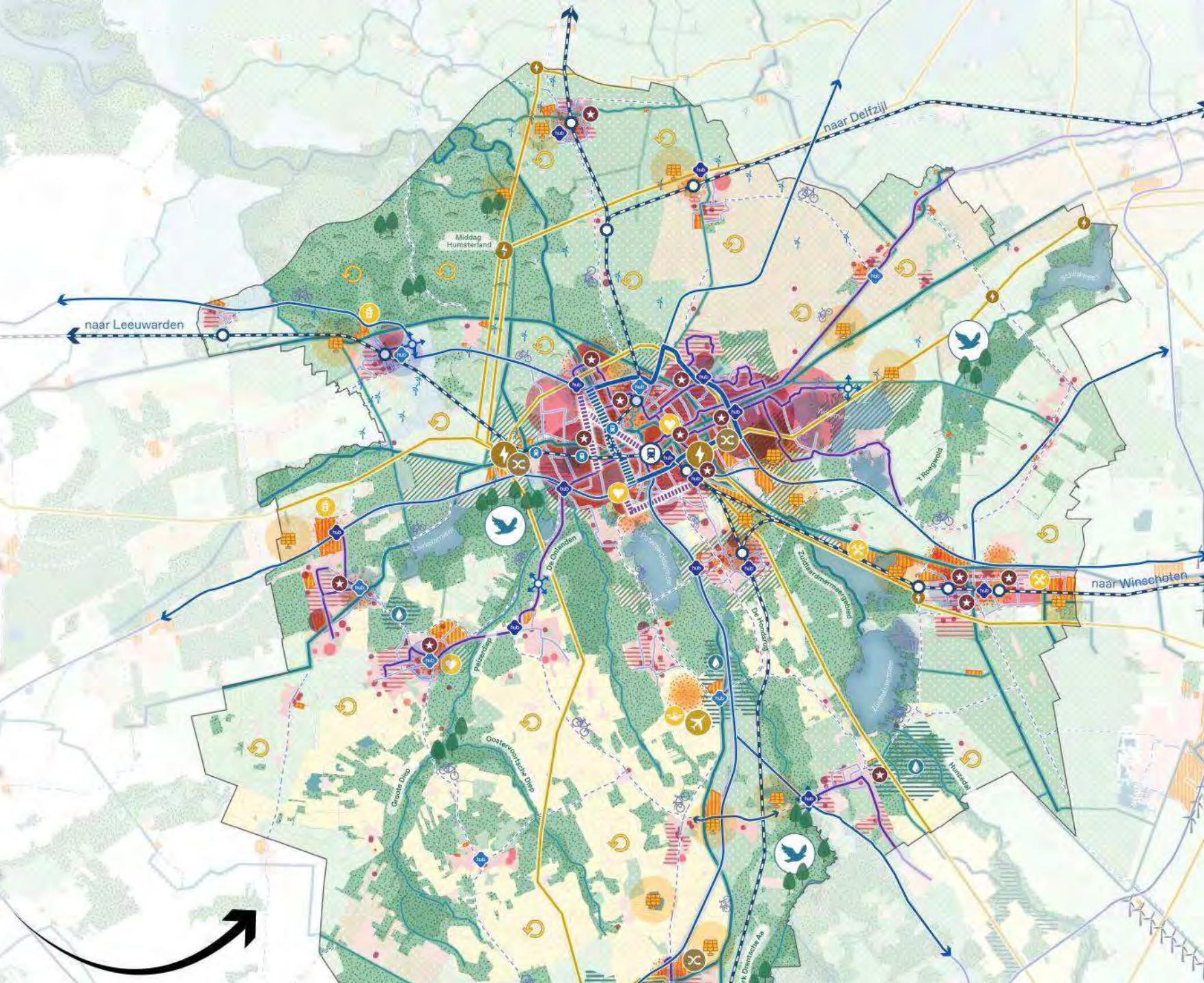


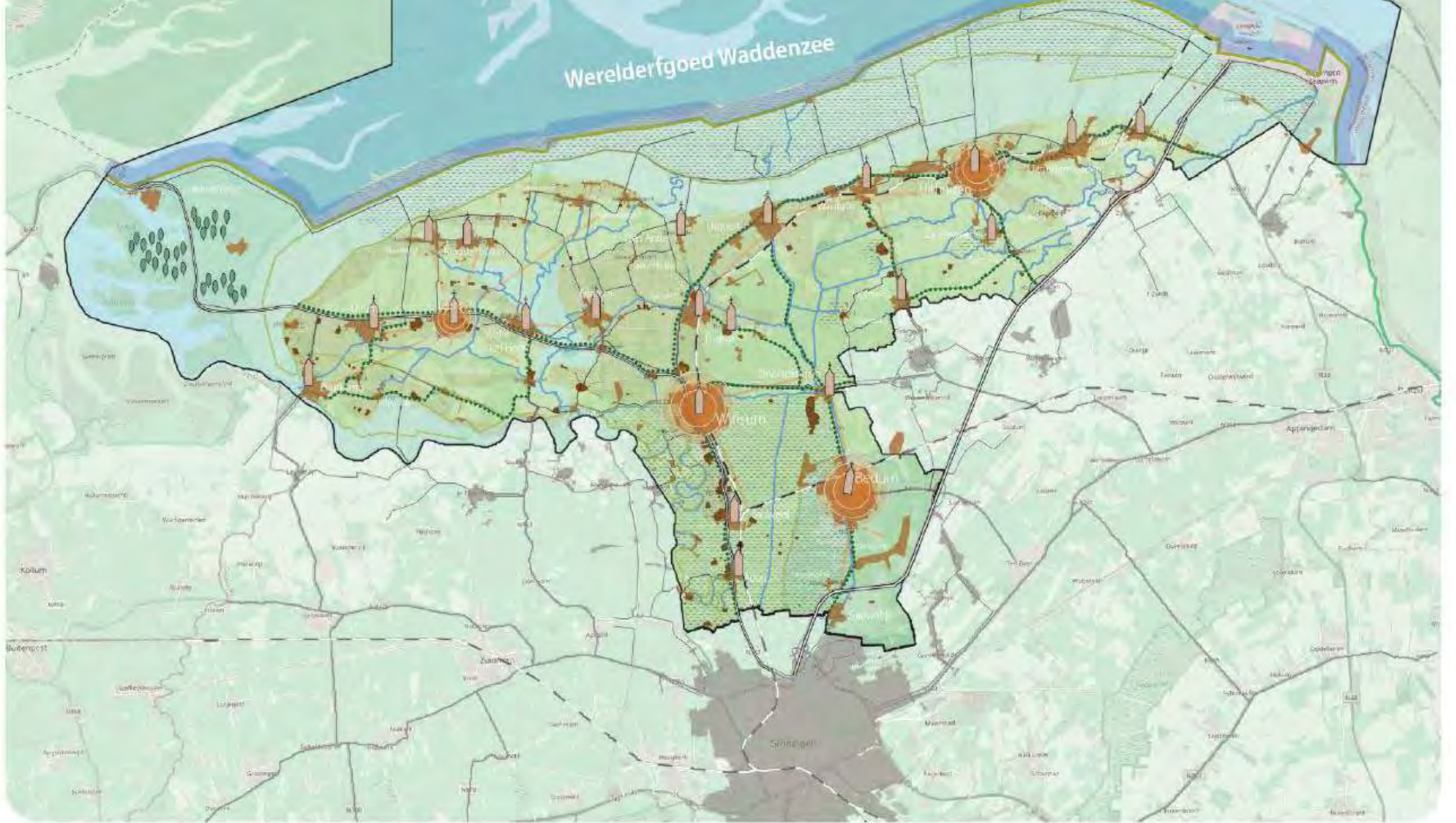
4

Energie



5





Laag van Het Hogeland

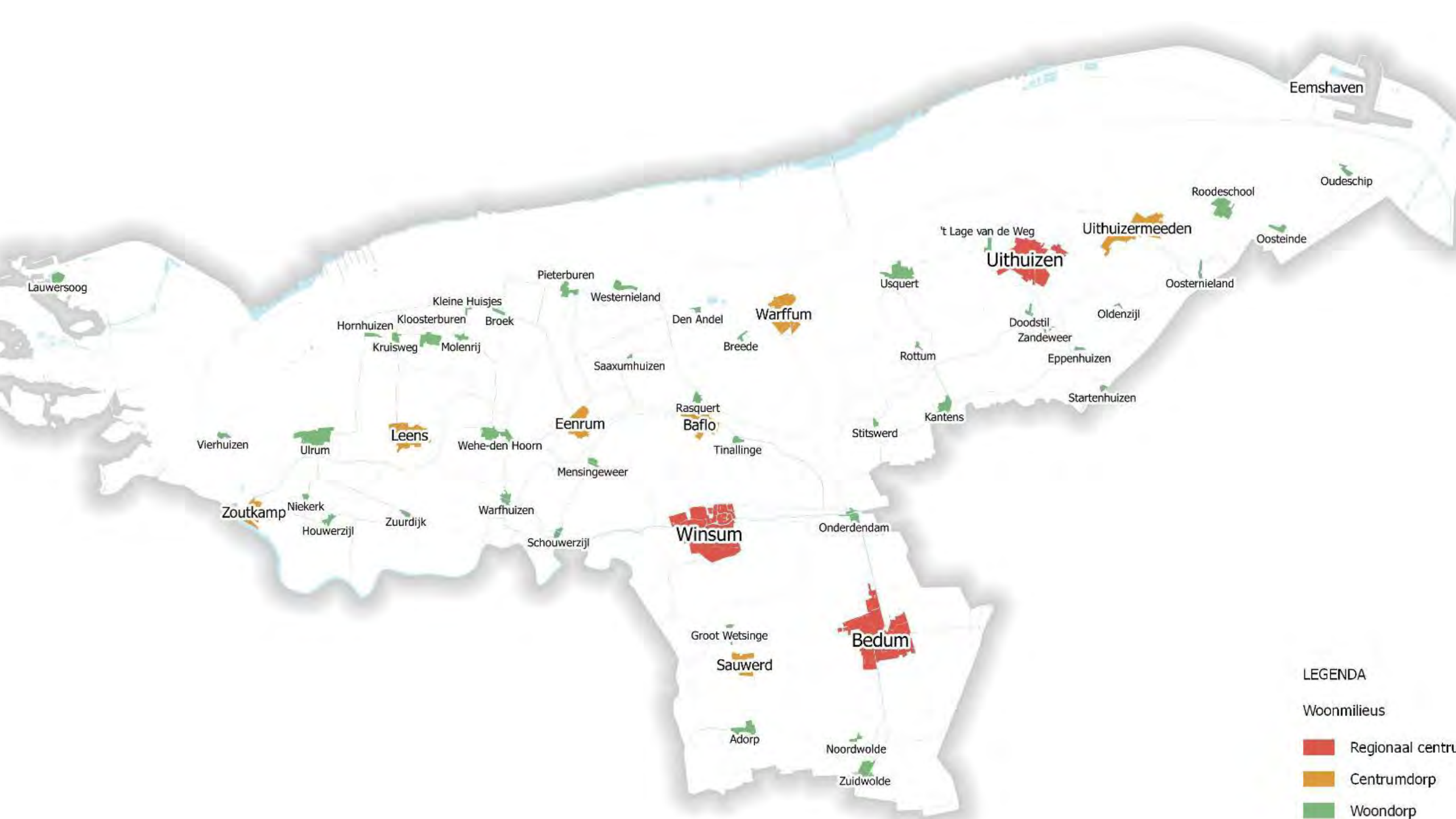


Laag van de (inter)nationale dynamiek

Onze ambities

1. Pronkjewail Hogeland
2. Levend(ig) Hogeland
3. Ondernemend Hogeland
4. Groenbewust Hogeland.





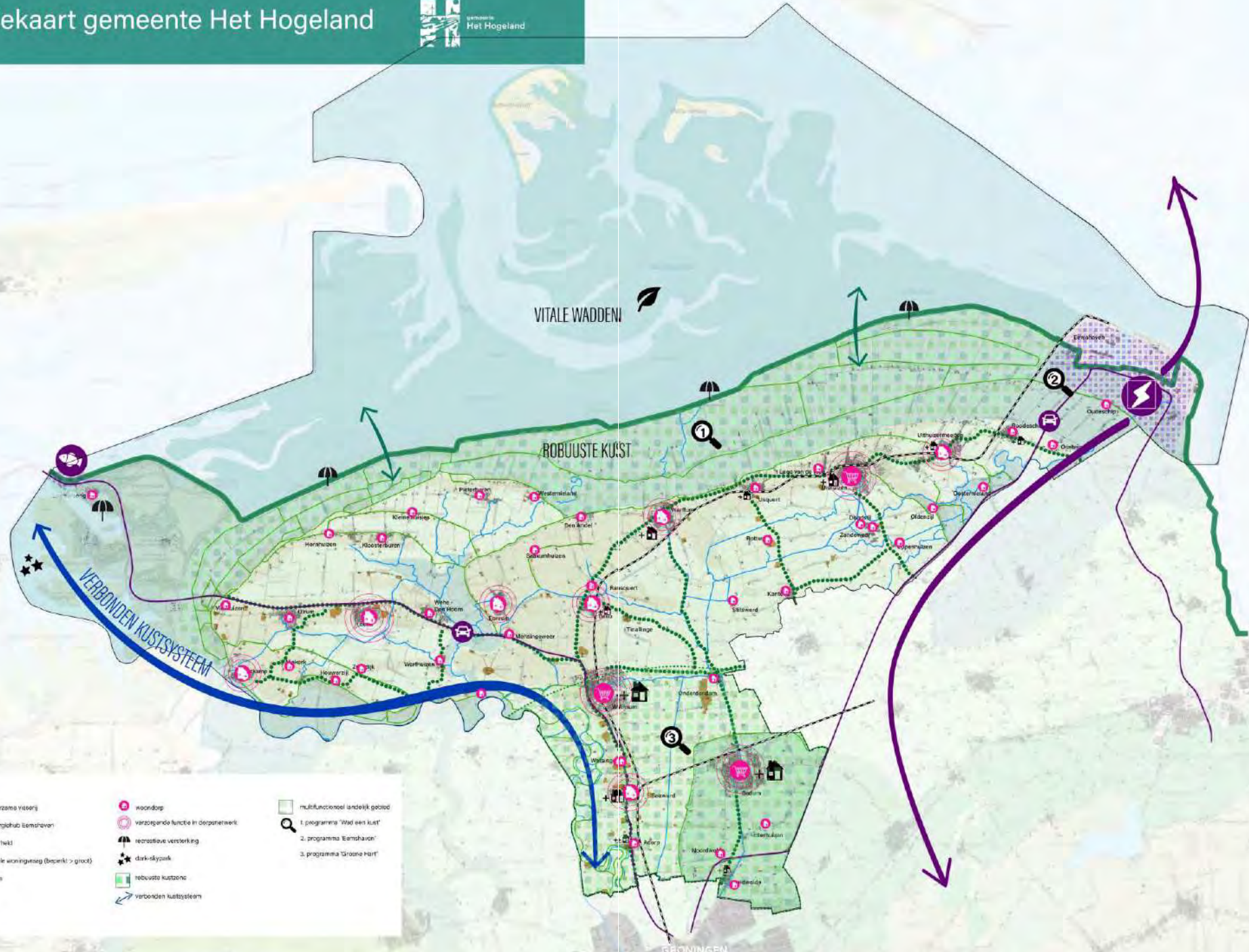
LEGENDA

Woonmilieus










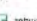




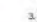

- Regionaal centrum
- Centrumdorp
- Woondorp

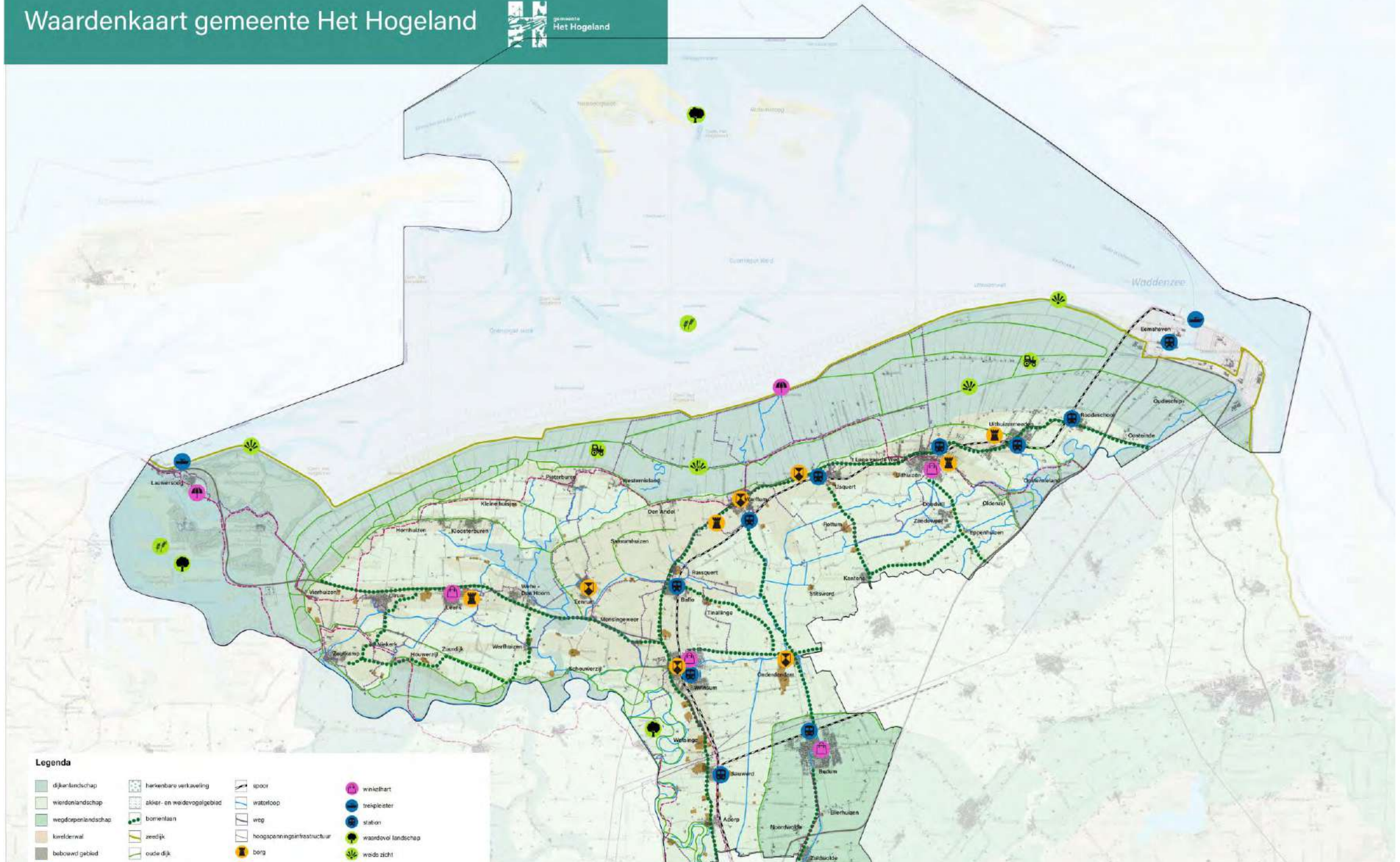






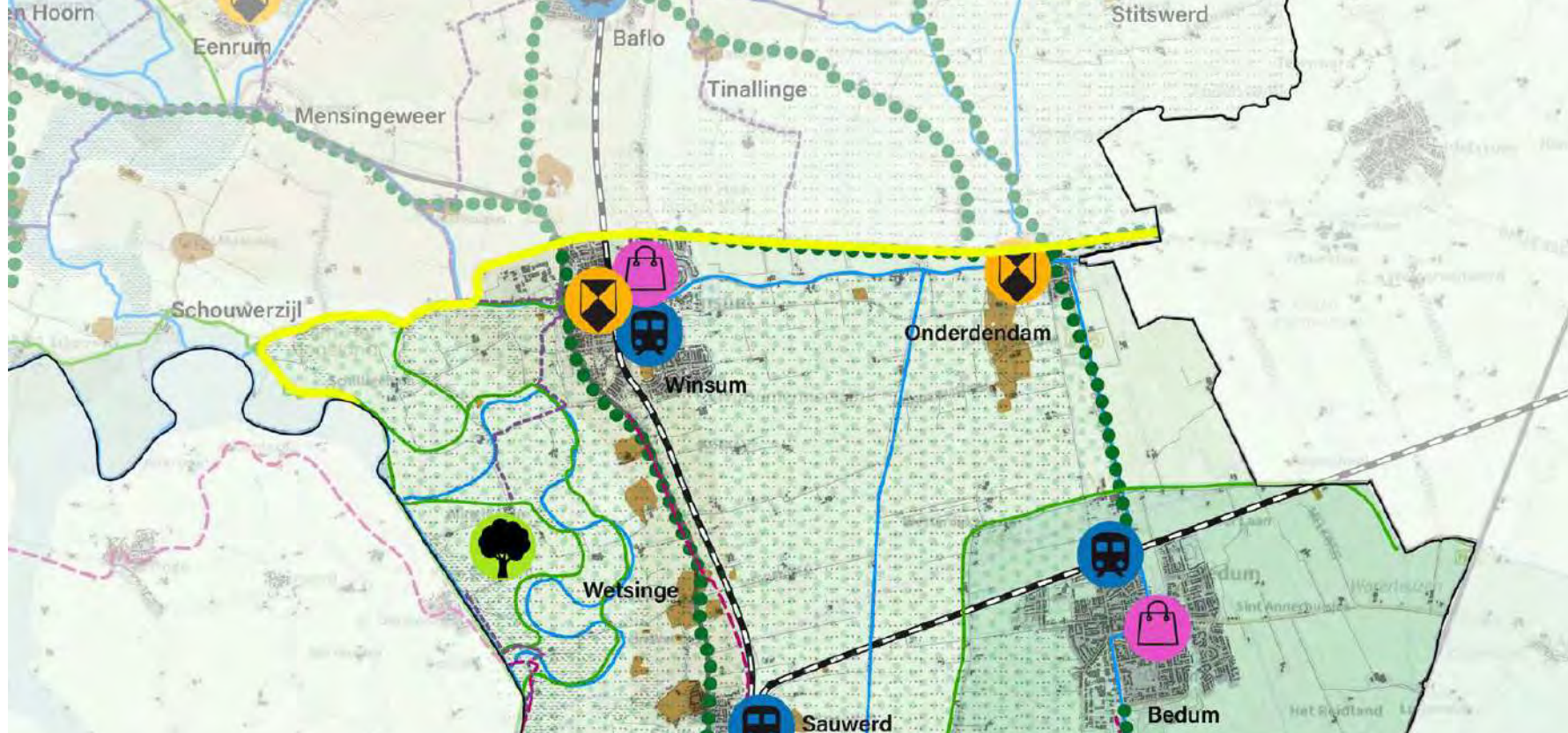
Legenda

-  ontwikkeling duurzame visserij
-  ontwikkeling energielab Eemshaven
-  goede bereikbaarheid
-  plek voor regionale woningbouw (beperkt > groei)
-  regionaal centrum
-  centrumdorp
-  woerdorp
-  verzorgende functie in dorpenetwerk
-  recreatieve versterking
-  dark-skypark
-  robuuste kustzone
-  verbonden kuststelsel
-  multifunctioneel landelijk gebied
-  1. programma 'Wad een kust'
-  2. programma 'Eemshaven'
-  3. programma 'Groene Hart'



Legenda

- | | | | |
|--------------------------------------------------------------------------------------------------------|----------------------------------------------------------------------------------------------------------------|-----------------------------------------------------------------------------------------------------------------|--------------------------------------------------------------------------------------------------------|
|  dijkland |  herkenbare verpakking |  spoor |  winkelhart |
|  weiden |  akker- en weidevogelgebied |  waterloop |  trekplezier |
|  wegdorpenlandschap |  bosland |  weg |  stations |
|  korelderwal |  zeedijk |  hoogspanningsinfrastructuur |  waardvol landschap |
|  bebouwd gebied |  oude dijk |  berg |  weidezicht |



Legenda

 dijenlandschap	 herkenbare verkaveling	 spoor	 trekpleister
 wierdenlandschap	 akker- en weidevogelgebied	 waterloop	 station
 wegdorpenlandschap	 bomenlaan	 weg	 waardevol landschap
 kwelderwal	 zeedijk	 borg	 weids zicht
 bebouwd gebied	 oude dijk	 rijksbeschermd dorpsgezicht	 natuur
 wierde	 lange-afstandfietsroute	 trekpleister	 hoogwaardige landbouw
 laagte	 lange-afstandwandelroute	 winkelhart	





Indicatieve planning Folkerda fase 1

2023 - Voorbereiding en opstart
- Stedenbouwkundigplan

2024 - Ruimtelijke procedures
- Omgevingsplan

2025 - Opstellen inrichtingsplan
- Openbare ruimte